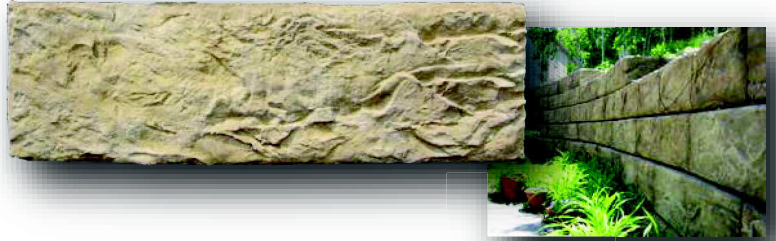


Textures

ReCon currently offers its licensed manufacturers a choice of five types of face textures. Most producers choose one of these textures as their standard and elect to maintain a working inventory of that texture. Other textures may still be available as a special-order. As with most special-order items, additional costs may be involved and sufficient time should be allowed for setup and production. Check with the ReCon licensed manufacturer in your market to determine what textures are available.

Le Sueur County Limestone

This texture offers the look of broken and weathered limestone and lends itself well to accent staining. When certain stain colors are used, Le Sueur County Limestone can also take on the appearance of a weathered sandstone material.



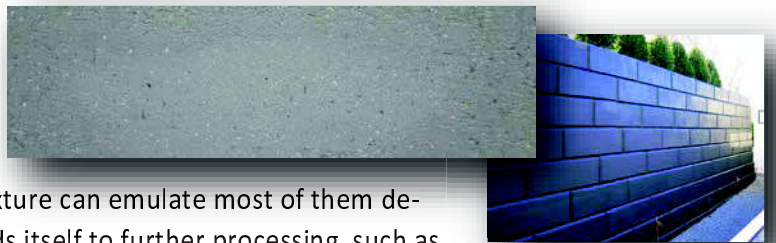
North Shore Granite

Granite may be the most recognized natural stone on earth. While its coloration varies widely, the texture of unprocessed granite is somewhat consistent in the way it fractures. Stained or unstained, the appearance of North Shore Granite is almost indistinguishable from weathered natural stone.



Old World

The Old World texture was originally developed as a special-order item to match the appearance of the popular cut stone building materials used in the late 1800's and early 1900's. Many different types of stone were used in this manner and the Old World texture can emulate most of them depending on the stains that are used. The face also lends itself to further processing, such as sand blasting or exposed aggregates.



Rustic

The Rustic texture captures the authenticity of a natural weathered cut stone that has been stacked in 8-inch coursing. The length of the individual stones varies from as little as 8-inches to as much as 26-inches, resulting in a natural random pattern.



Weathered Edge

With Weathered Edge, ReCon has carefully selected individual stones that offer depth and richness of texture and range of stone sizes. Stone heights range from 3 to 16-inches and widths range from 9 to 48-inches. The stones have been placed into a number of patterns that blend together to create an authentic and natural stone wall appearance.

